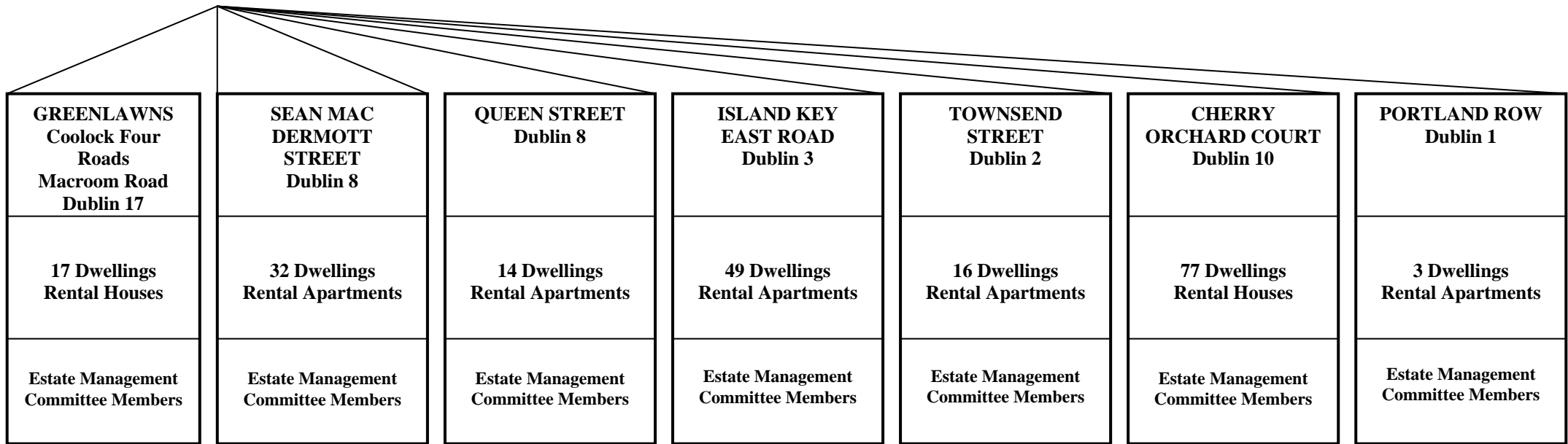


DUBLIN CO-OPERATIVE HOUSING SOCIETY LTD.

MEMBER / RESIDENTS



COMMITTEE OF MANAGEMENT
 (BOARD OF DIRECTORS)
 Policies and Procedures
 Management and Performance
 Budgets, Accounts, Audits
 Housing Administration
 Rents and Service Charges
 Caretaking, Repairs, Maintenance
 Monitoring and Co-ordination
 Co-operative Social and Community Development

┌
 ───
Manager/Secretary
Area Manager
Housing Officer
Clerical Officer
Buildings Officers

AFFILIATED TO:- NATIONAL ASSOCIATION OF BUILDING CO-OPERATIVES (NABCO)