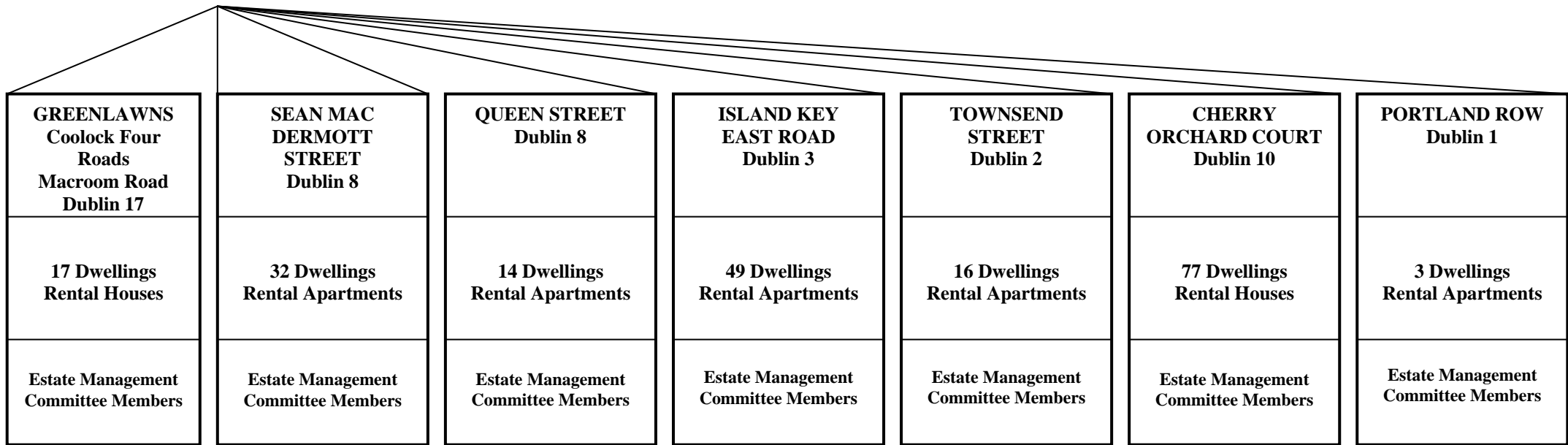


DUBLIN CO-OPERATIVE HOUSING SOCIETY LTD.

MEMBER / RESIDENTS



COMMITTEE OF MANAGEMENT
(BOARD OF DIRECTORS)
Policies and Procedures
Management and Performance
Budgets, Accounts, Audits
Housing Administration
Rents and Service Charges
Caretaking, Repairs, Maintenance
Monitoring and Co-ordination
Co-operative Social and Community Development

┌
—
Manager/Secretary
Area Manager
Housing Officer
Clerical Officer
Buildings Officers

AFFILIATED TO:- NATIONAL ASSOCIATION OF BUILDING CO-OPERATIVES (NABCO)